



MSCOCO & Mapillary Panoptic Segmentation Challenge 2018

Megvii (Face++)

Members



Chao Peng
*



Jingbo Wang
*



Changqian Yu
*



Xu Liu



Huanyu Liu



Zeming Li



Yueqing Zhuang



Xiangyu
Zhang



Gang Yu



Jian Sun

Outline

- Pipeline
- COCO Panoptic Segmentation
 - Proposed Method
 - Results
- Mapillary Panoptic Segmentation
 - Proposed Method
 - Results

Pipeline

Semantic
Segmentation

Stuff



Pipeline

Semantic
Segmentation

Stuff



Instance
Segmentation

n

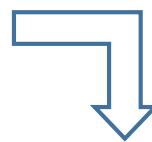
Things



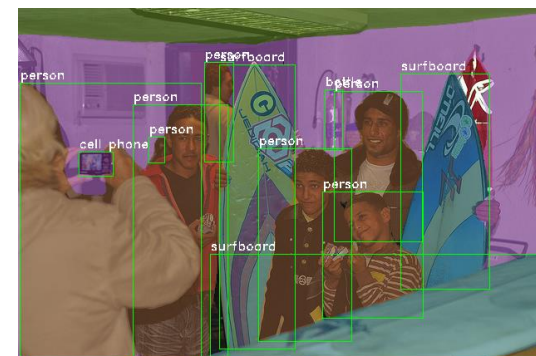
Pipeline

Semantic Segmentation

Stuff

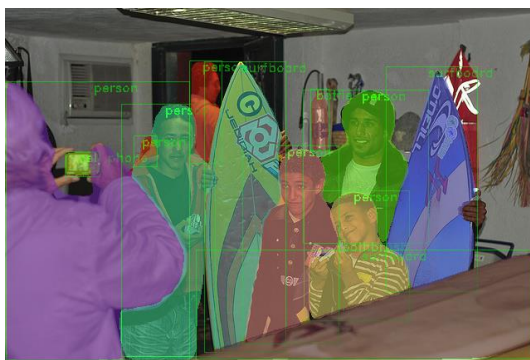


Post Processing



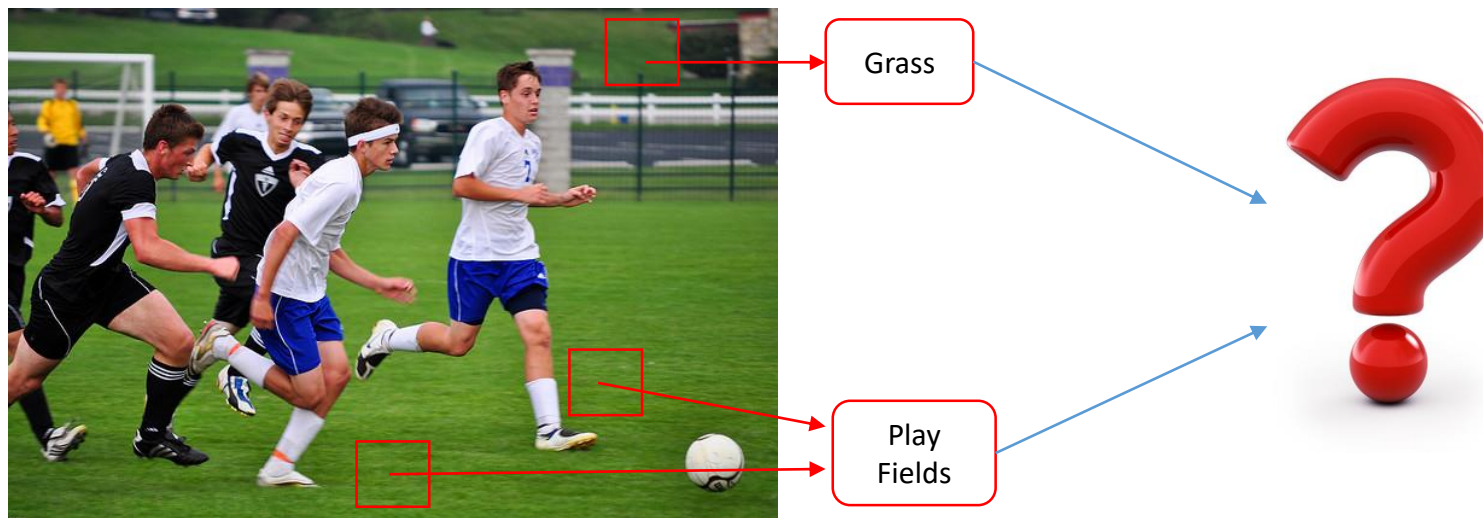
Instance Segmentation

Things

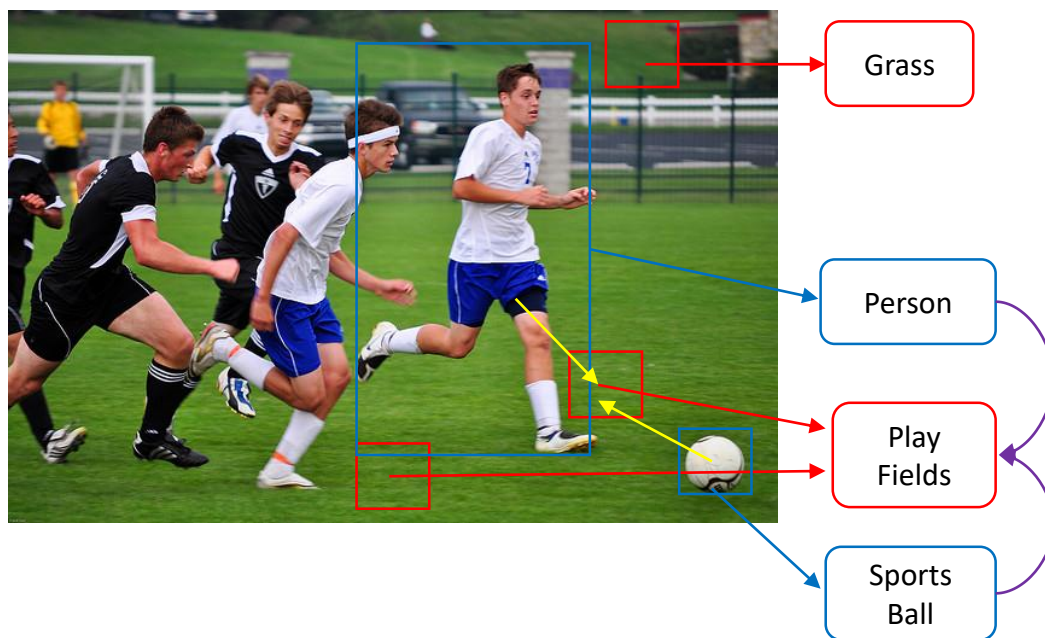


All

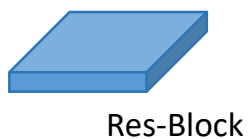
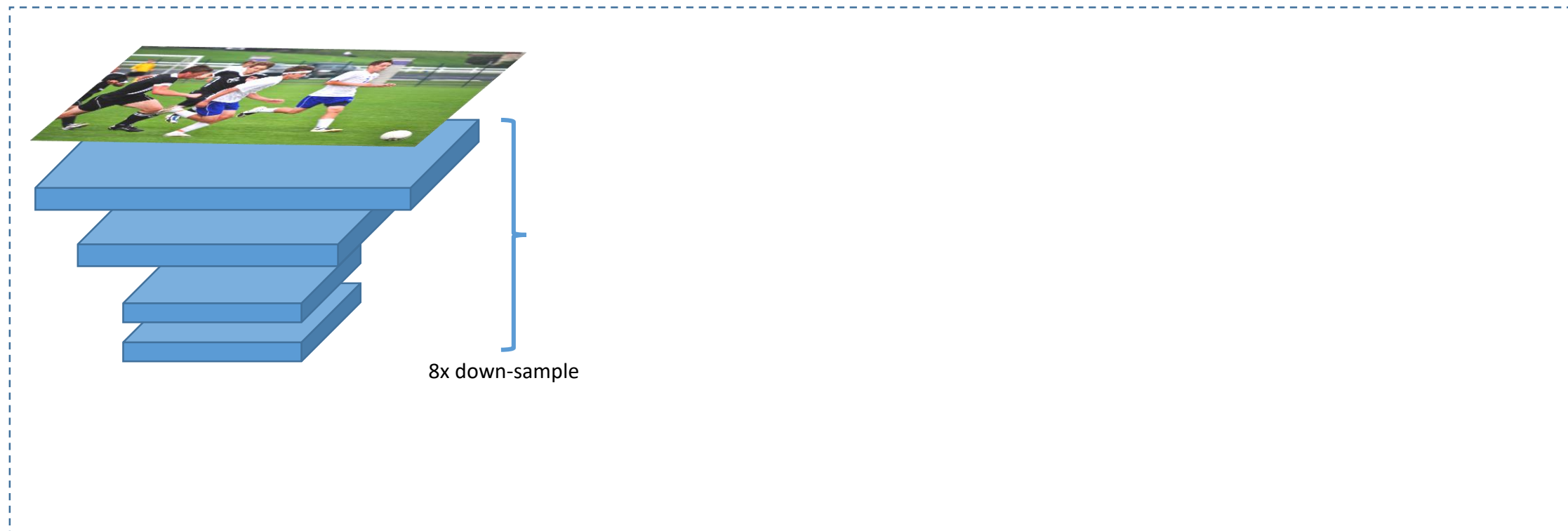
Hard Example



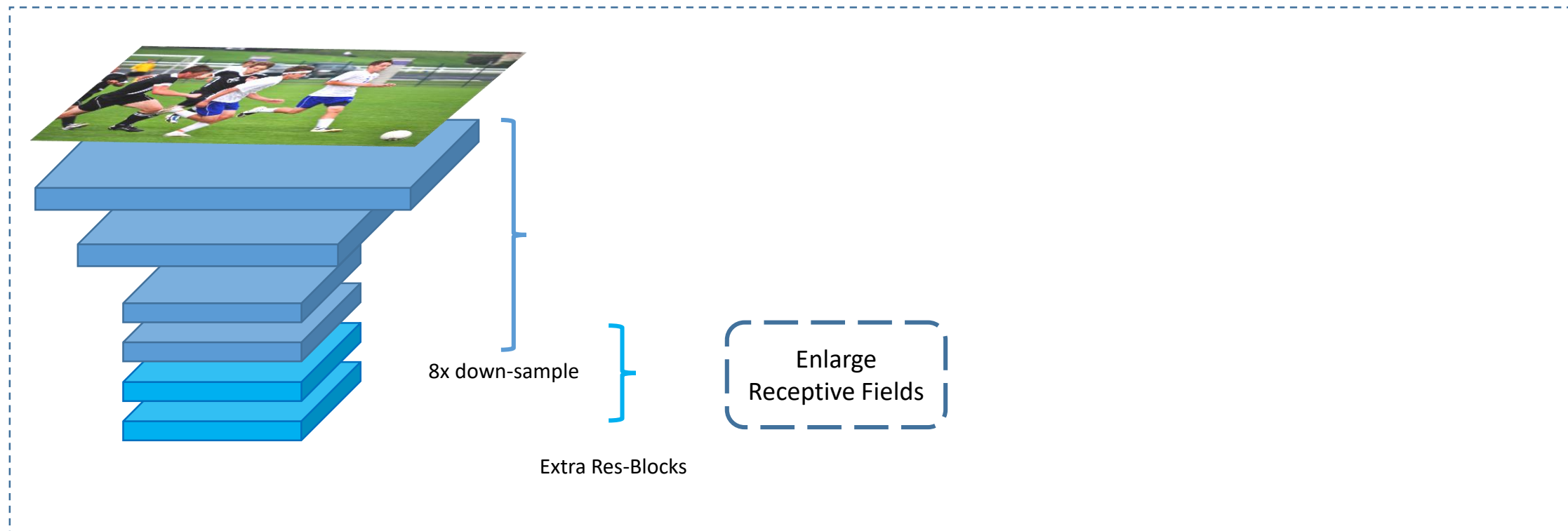
Solution: Object as Context



Object Context Network

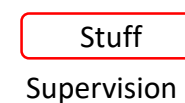
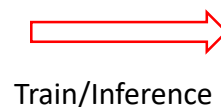
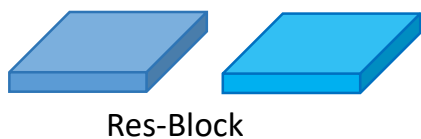
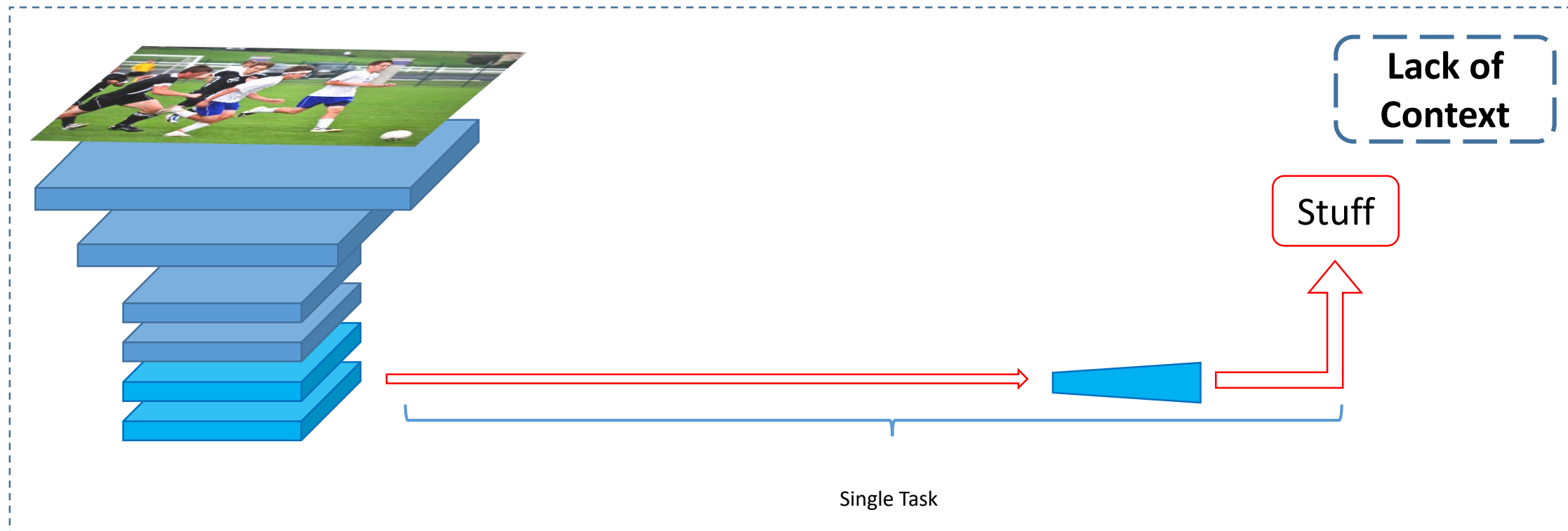


Object Context Network

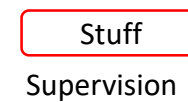
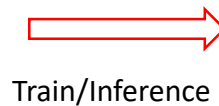
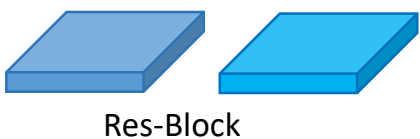
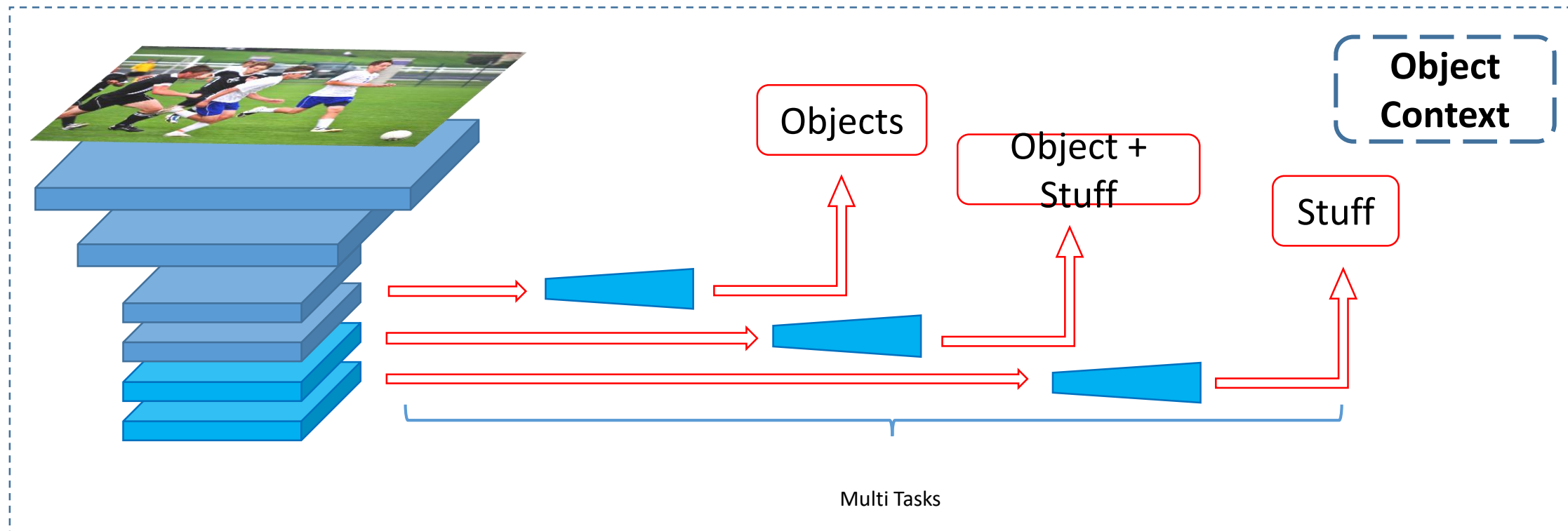


Res-Block

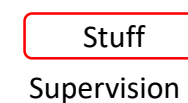
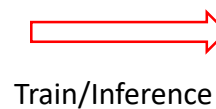
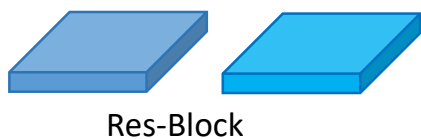
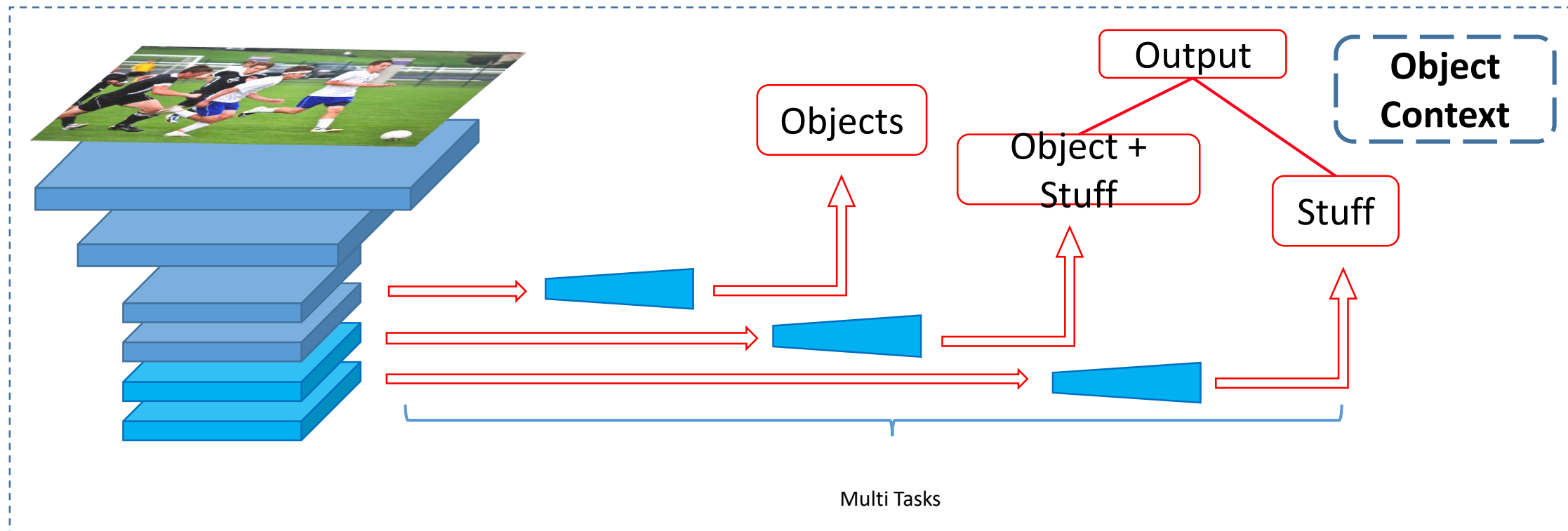
Object Context Network



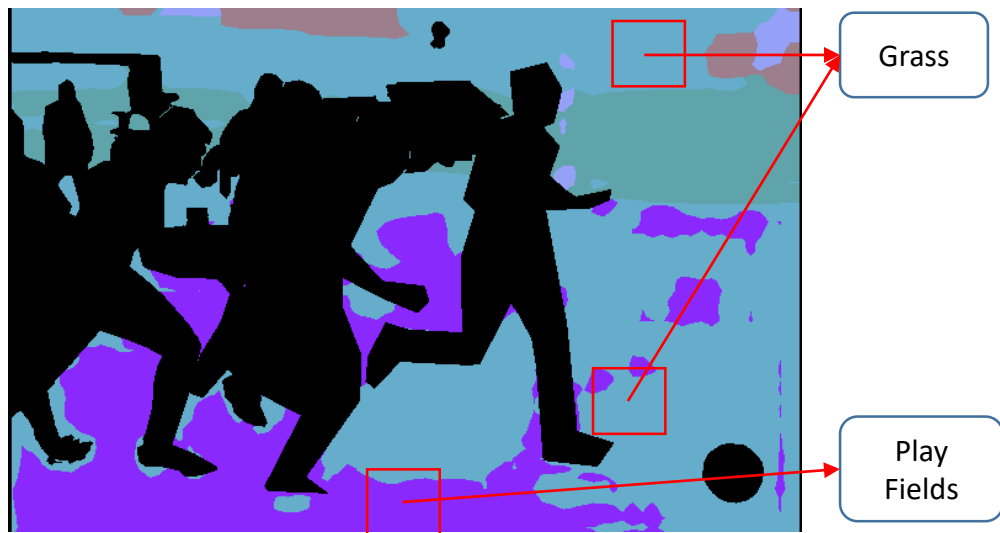
Object Context Network



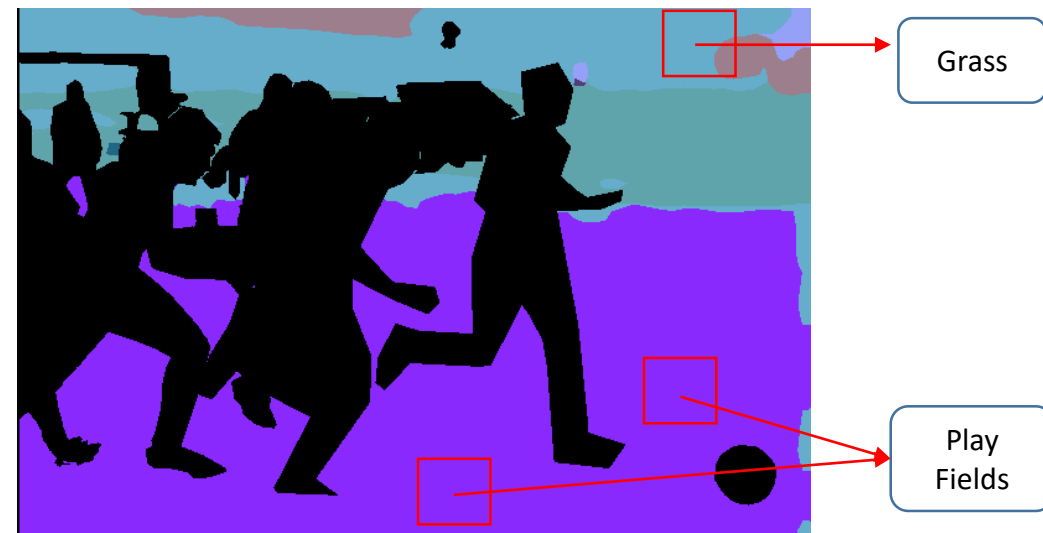
Object Context Network



Object Context Visualization

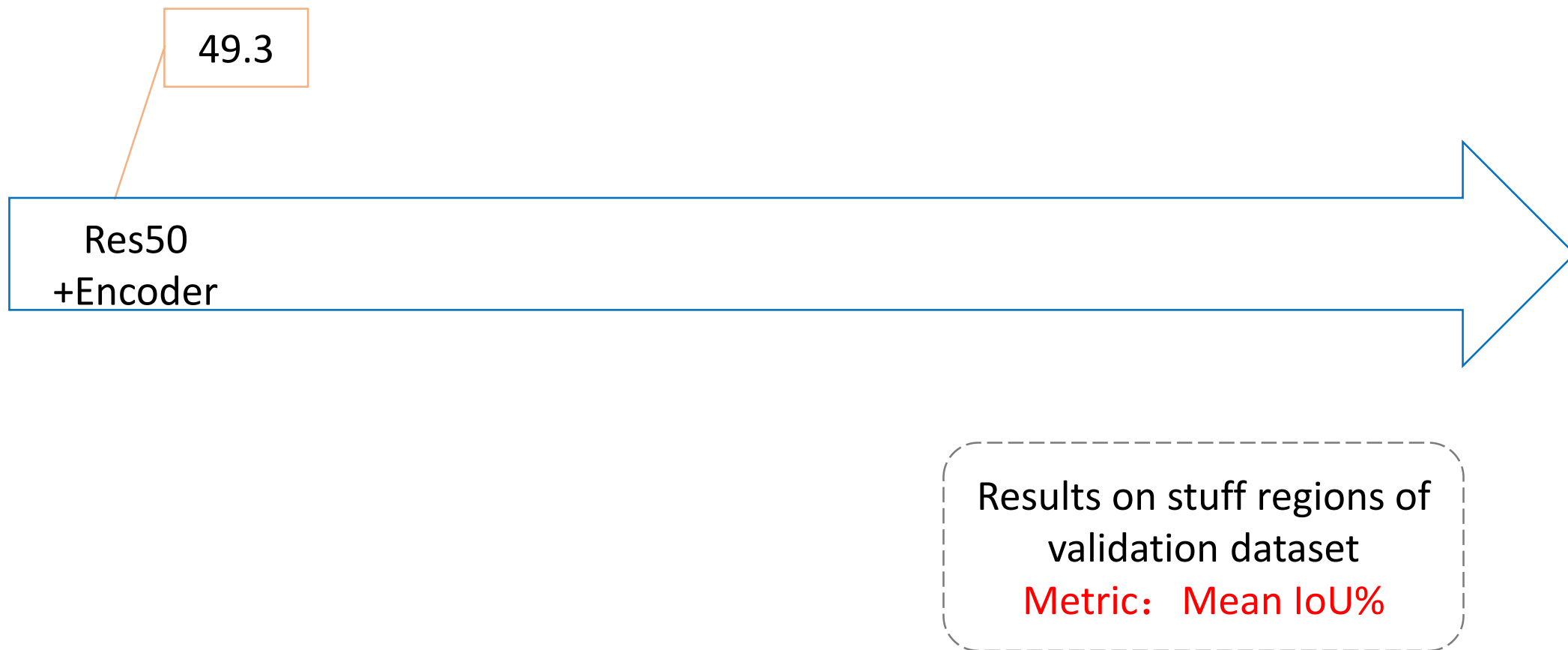


Single Task

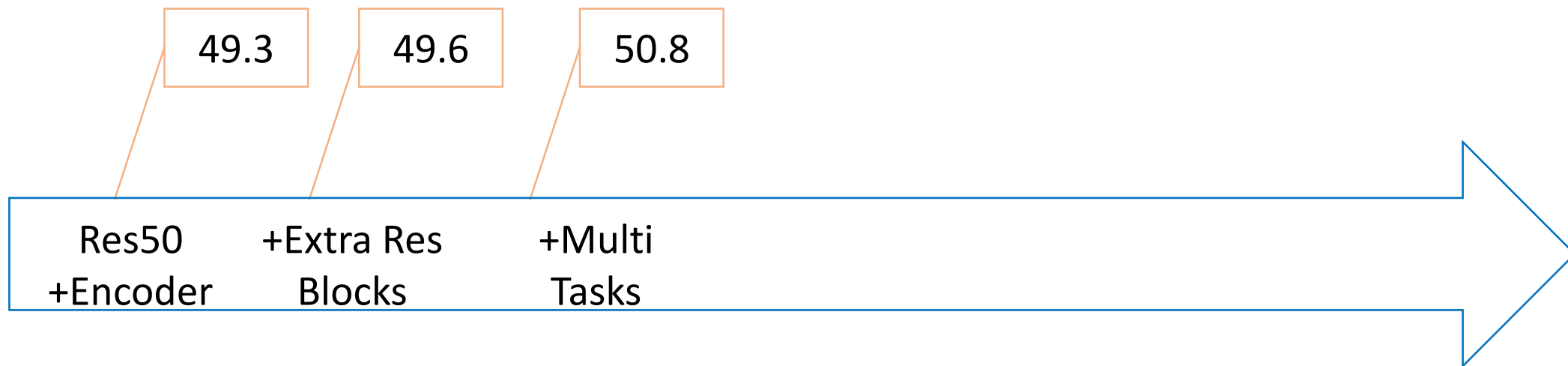


Multi Tasks

COCO Stuff Results

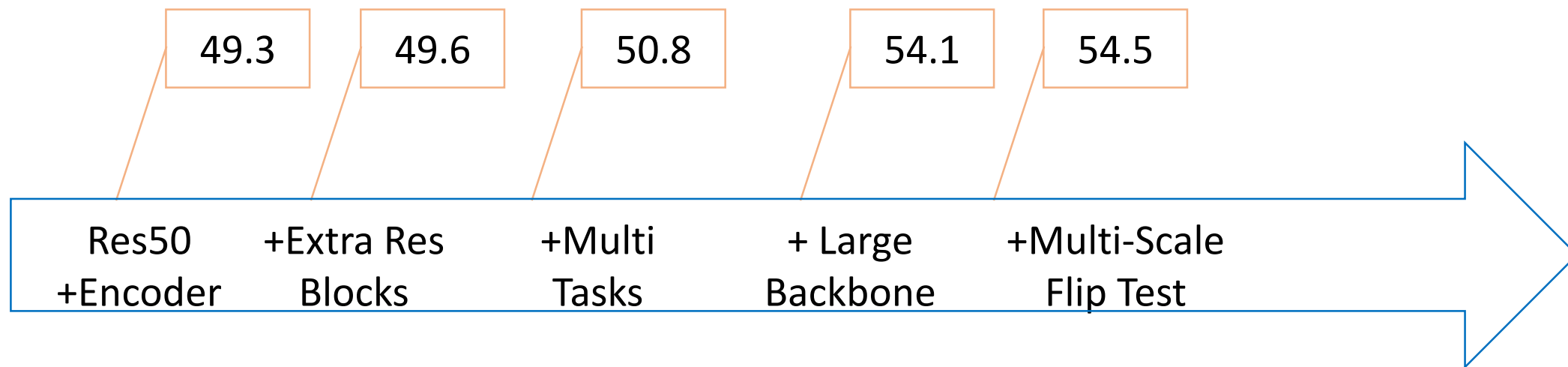


COCO Stuff Results



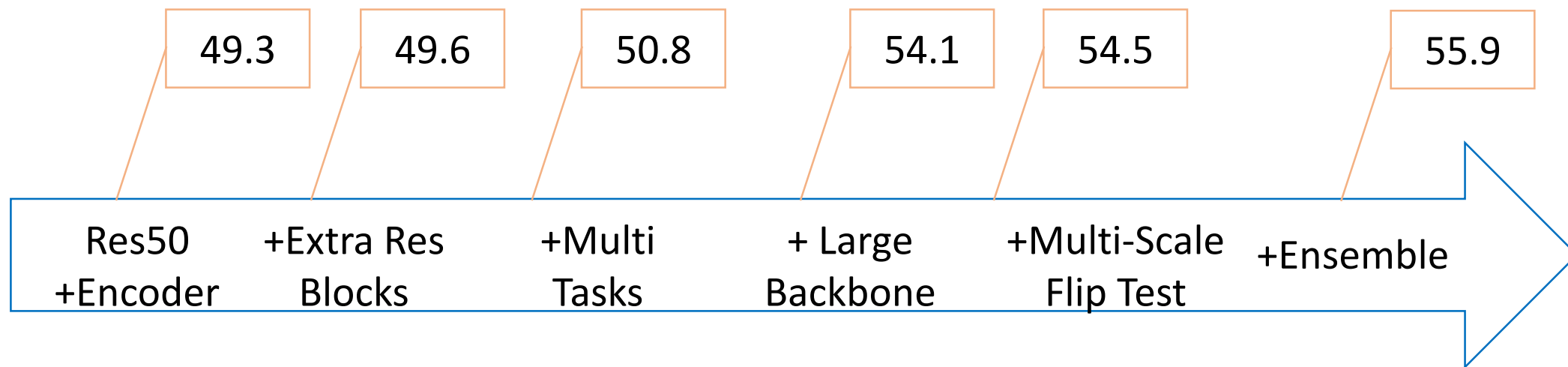
Results on stuff regions of
validation dataset
Metric: Mean IoU%

COCO Stuff Results



Results on stuff regions of
validation dataset
Metric: Mean IoU%

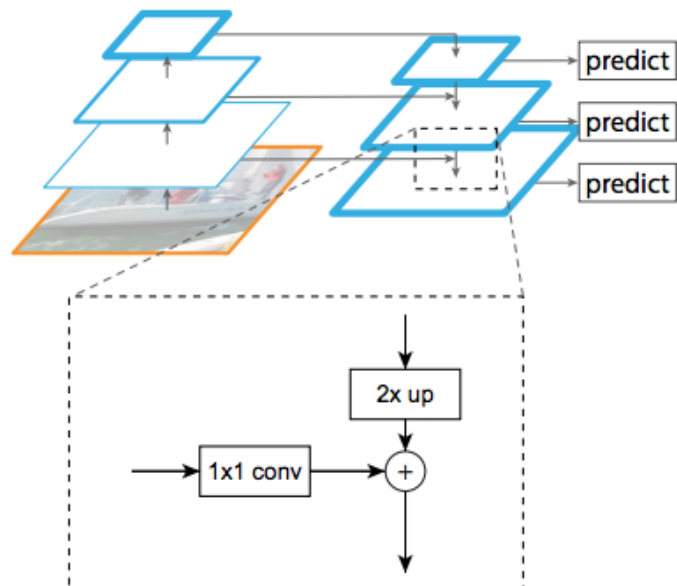
COCO Stuff Results



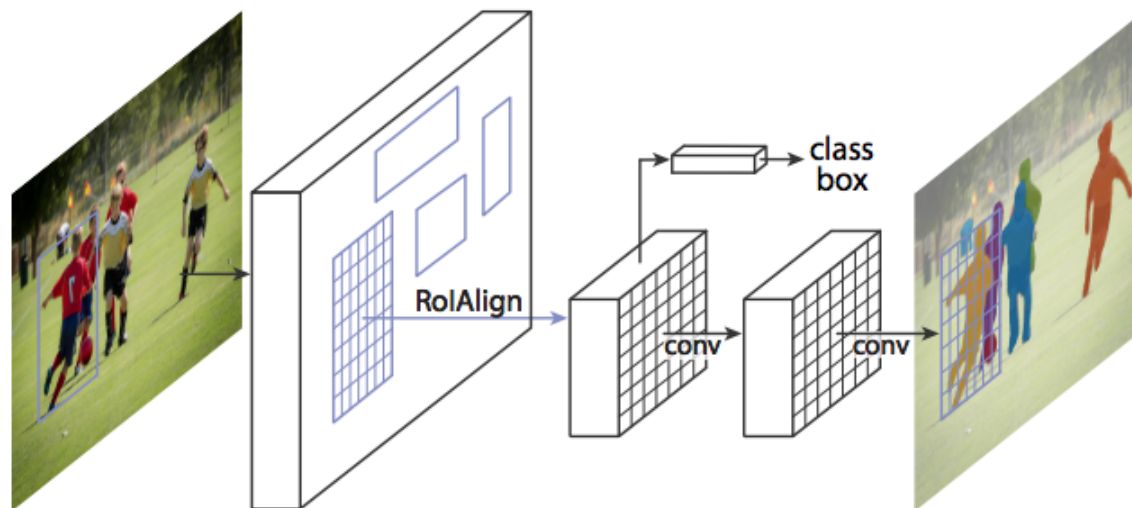
Results on stuff regions of
validation dataset

Metric: Mean IoU%

Instance Segmentation



FPN



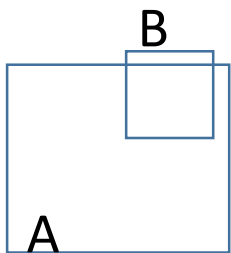
Mask RCNN

Detailed results from our Instance Segmentation Task.

Post Processing



1. Spatial Hierarchical Relation (SHR)



$$r_{A_covered} = \frac{A \cap B}{A}$$
$$r_{B_covered} = \frac{A \cap B}{B}$$

If $r_B > \text{threshold}$, we put B object on top

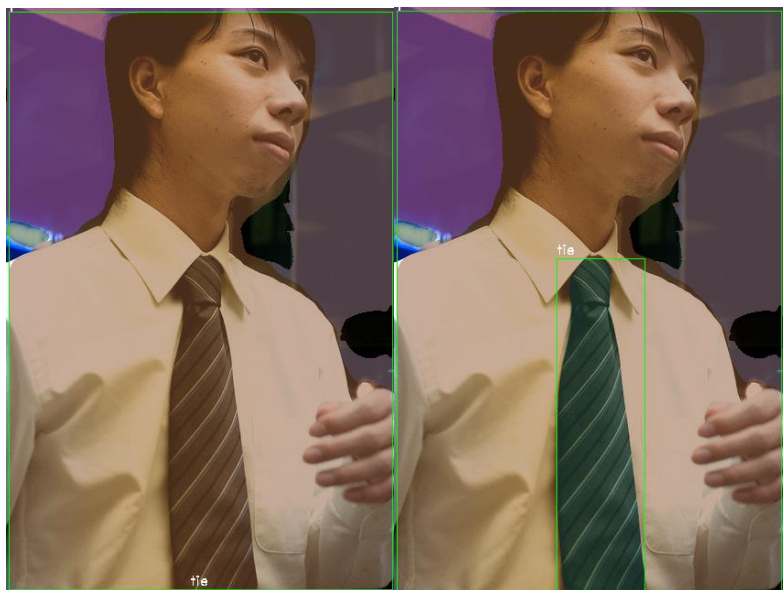
2. Grid-search *min_thing_area* and other parameters

**PQ on
Validation Dataset**

| Method | PQ |
|----------|------|
| Base | 49.7 |
| With SHR | 51.5 |
| Final | 52.7 |

Post Processing Examples

- The effect of our SHR module between 'people' and 'tie'.



Without SHR

With SHR



Without SHR

With SHR

Panoptic Results on COCO

- COCO Validation:

| COCO Val | PQ | SQ | RQ |
|----------|-------------|------|------|
| ALL | 52.7 | 82.5 | 62.8 |
| Thing | 61.5 | 84.6 | 72.2 |
| Stuff | 39.5 | 79.3 | 48.6 |

- COCO Test-dev:

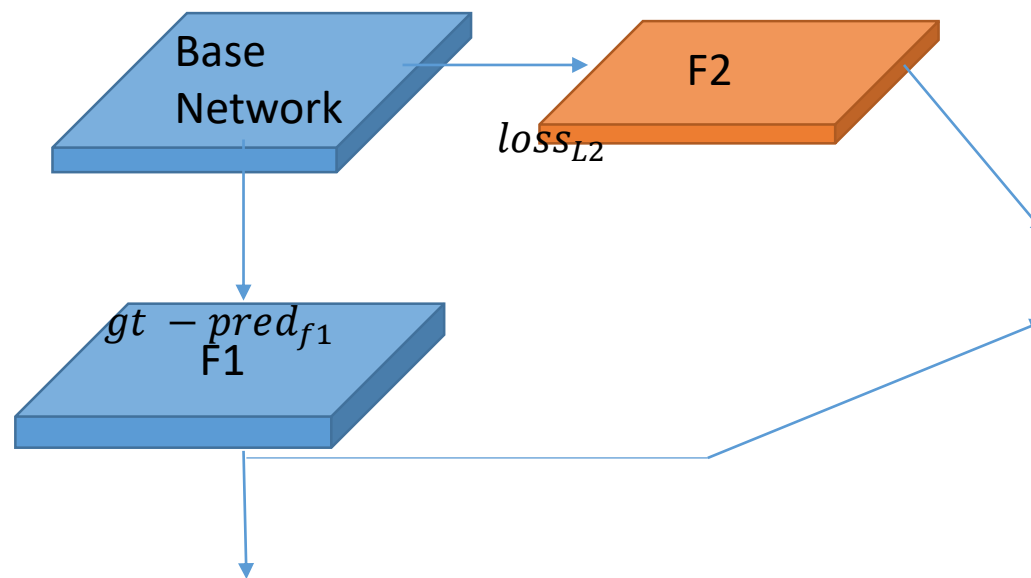
| COCO Test-dev | PQ | SQ | RQ |
|---------------|-------------|------|------|
| ALL | 53.2 | 83.2 | 62.9 |
| Thing | 62.2 | 85.5 | 72.5 |
| Stuff | 39.5 | 79.7 | 48.5 |

Mapillary Panoptic Segmentation

Residual L2 Loss

Design

1. Extract two feature maps from Base Network: F1 and F2
2. F1 predicts the probability map of all classes with cross entropy loss $loss_{cls}$
3. F2 predicts the residual value between F1 and GT, with L2 loss $loss_{L2}$



Mapillary Stuff

- Evaluation of semantic segmentation on the Val dataset

| Method | Stuff mIoU(%) |
|---------------------|---------------|
| Baseline(Res50) | 56.3 |
| +Residual L2 Loss | 58.0 |
| +Multiscale Testing | 58.7 |
| +Large Model | 62.4 |
| +3 Model Ensemble | 62.8 |

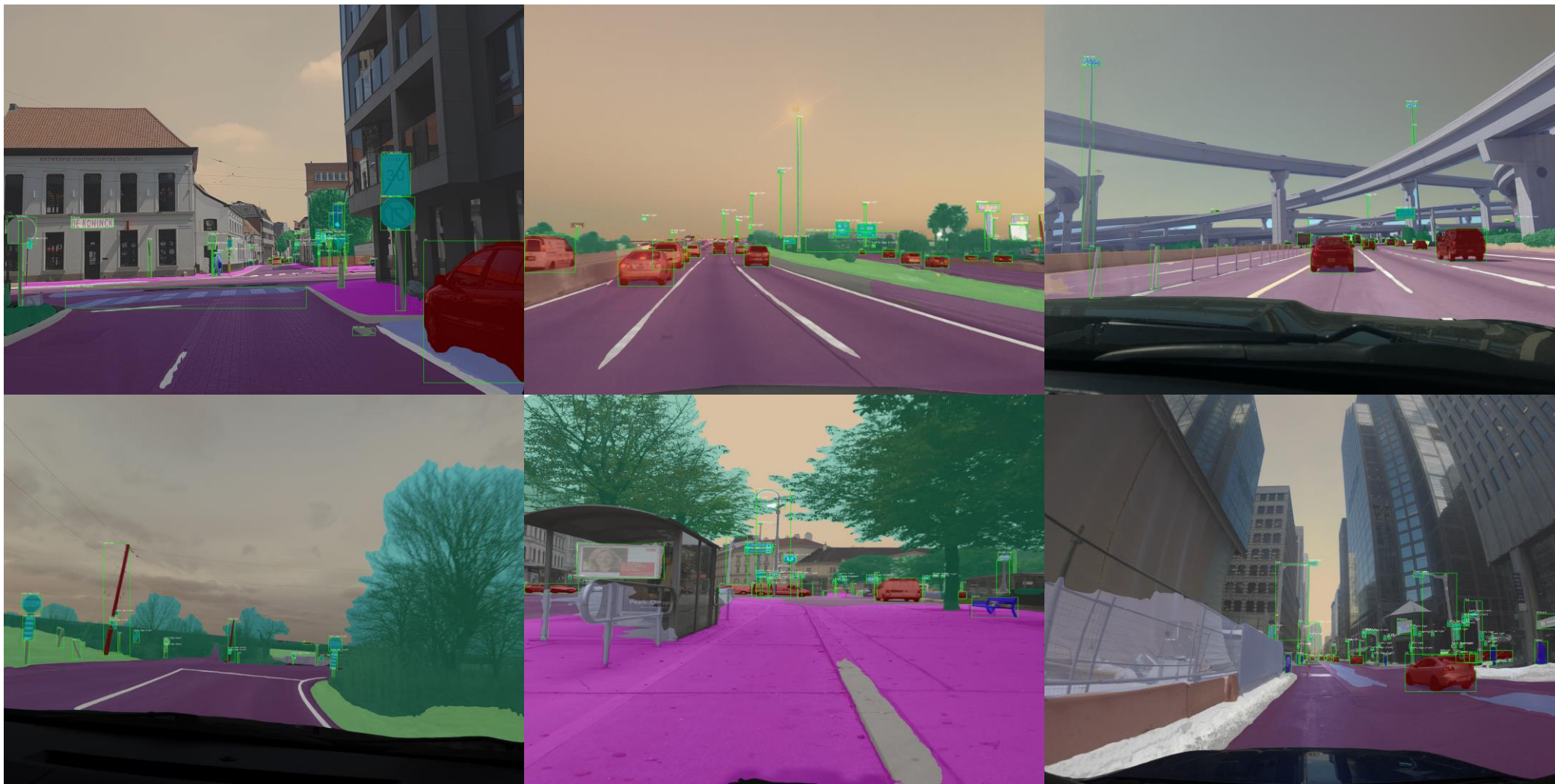
Mapillary Panoptic

- Our Result on Val dataset

| | PQ | SQ | RQ |
|--------|------|------|------|
| All | 40.8 | 77.1 | 50.5 |
| Things | 36.6 | 77.8 | 45.9 |
| Stuff | 46.2 | 76.3 | 56.7 |

Mapillary Visualization

Face++ 旷视





Looking for Intern, Researcher, Research Engineer

career@megvii.com

yugang@megvii.com